

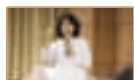
10



16



22



24



26



- The first medical institute for Women doctors in Korea.

- KUMC offers quality care by using high technology equipment and techniques and by providing advanced medical services.

- KUMC and 22 other research centers are the driving force for developing and expanding advanced medical science with creative research and studies.

- KUMC constantly strives to intensify the level and depth of research by nurturing and training the potential human resources.

- KKUMC shares not only happiness but also love with the world with medical services that started with the establishment of the center.

- KKUMC practices “Being happy administration” with advanced medical services and best wishes for our patients to get well soon.

30



32



34



36



38



40



- KUMC is leading its development into a worldwide research-focused university by intensifying and maximizing its competencies.

- The College of Health Sciences trains 21st century leading professionals under the vision of a “Global standard university in the health-science sector”.

- Delivering competent human resources constantly to the world, Graduate Schools of Public Health&Dentistry are surely the learning hubs for the medical professionals.

- Anam Hospital sets a new paradigm of medical services by practicing “patient-centered” care and by using advanced medical technology.

- Guro Hospital is now taking steps to be a leading 21st century hub for the North East Asia region based on three core-competencies.

- Balancing with the uniqueness of the town and based on a focused strategy, Ansan Hospital has become the representative hospital in the west coast of Korea.

- Realization of the dream - the leap up to a global level medical center.

- Becoming a central representative hospital of the North East Asia region

- Letter from the vice president for health affairs, Korea University.

- KUMC departments

THE MEDICAL PRIDE



Effort, Passion, and Pride



Korea University Medical Center (KUMC) is on its way to set a new paradigm of hospital amid fast changing times.

Adding to the world with utmost competence and global standards.,

KUMC is now aiming to be a world class hospital.

Our efforts and passion will be the leading assets to set a new standard of hospital culture.

The first medical institute for women doctors in Korea

from 1938

The history of KUMC gives pride for the medical services at the Korea Boseng College, the predecessor of the present Korea University and Kyung Sung Women's Medical Institute which were established in the pursuit of modernization and the safety of our nation. This encounter of the two institutes was the seed for the Korea University Medical Center. Later in 1971, the Korea Central School and Woosuk School formed merged leading to the present Korea University Medical Center.



1938

The foundation of Kyung Sung Women's Medical Institute

The first place in Korea educating and training women doctors. In the Myungryun Medical School Building, The Kyung Sung Women's Medical Institute was the first place for Korean women doctors to come forward successfully.



1948

The affiliated Hospital of the National Seoul Women's Medical College

After the restoration of independence, this college was renamed the Affiliated Hospital of Seoul Women Medical College. Two year preparatory and four year regular courses have been in progress here since 1976.



1976

Affiliated Hospital of Korea University

Woosuk Hospital was the name for the medical center after the annexation of Korea University and the Woosuk Institute in 1971. Later in 1976, it was renamed the Affiliated Hospital of Korea University.



1938

Foundation of Kyung Sung Women Medical College

1941

Founded affiliated hospital

1948

Renamed the Seoul Women's Medical College Hospital
Promoted to Seoul Women's Medical School

1957

Seoul Women's Medical School was changed to Soodo Medical School
Renamed Soodo Medical School Hospital

1967

Renamed the affiliated hospital of Woosuk University Medical School

1971

Renamed Woosuk Hospital, affiliated with the hospital of Korea University

1976

Renamed Korea University Hospital

1983

Renamed Hyehwa Hospital, affiliated with the Korea University Medical School
Foundation of KUMC
Opened Guro Hospital affiliated with KUMC

1984

Opened Yeoju Hospital

1985

Opened Banwol Hospital

Continuous development to provide a very refined medical service

Now, 21st century

KUMC is now leaping toward being a leading medical center in the world. Since its relocation to the Anam-dong campus in 1991, KUMC has opened up a network of medical centers using synthetic information systems. It has consolidated its position and reputation as a leading 21st Century medical center by providing the most refined medical services backed by intensification of and specialization of competencies.



2001

Synthetic Medical Information Era Started

With opening a synthetic medical information center and running Full PACS in 2001, KUMC started a new chapter in the information era in Medical informatics



2003

Specialization of Individual Centers

KUMC focuses on strengthening its competitiveness by specializing each sector in the Center. These professional and specialized centers, together with refined medical services, are surely at a world-competitive level.



2005

Announcing Vision & Mission

In Oct 2005, KUMC proclaimed its vision and values. Promoting 5 core values under the vision of "The best medical service, Research and Education", KUMC pledged to play a role in leading Korea University to be one of the top-100-Universities in the World.



1991

Opened Anam Hospital in a newly built building complex

1998

Managed and operated Ichon Medical Center
Closed Yeosu Hospital
Extended the building complex to 405 beds

2000

Anam Hospital was extended to 815 beds

2001

Extended Ansan hospital to 580 beds
Extended Guro hospital to 620 beds
IT Center was placed and opened within KUMC

2002

Operated an angiographic system in Ansan Hospital
Operated a synthetic information system at Guro Hospital
Completed construction of the 1st phase of a synthetic information system of KUMC

2003

Opened the Korea artificial organs center
Launched an automated system for on-duty records at Ansan Hospital
Opened a cancer center
Opened a cerebrovascular center

2004

Operated PET CT
Launched Full PACS and Video EMR
Opened a Refrigerated Operation Center
Opened a Day Surgery Center

2005

Vision proclaiming Ceremony

2006

Ansan hospital was renovated and extended to 938 beds
Extended the Clinics Research Center
Introduced TLA (Automated Lab system)

2007

Guro hospital opened a new complex



Touching Future Touching Humankind- The New Model for a Medical Center

KUMC is achieving the true value of a dedicated hospital with “The best medical service, research and education”

Aiming to be a “Human-oriented and dedicated hospital”. As KUMC is making enormous efforts to provide optimal service, research, and education, it will be a more competitive and capable medical center with a new infrastructure and innovative systems.



Outstanding passion,
Outstanding effort,

The motivator

Touching Lives through an Advanced Medical Infrastructure

Robot Operation Center | Most skillful cancer surgeons combine their skills with a high-tech robot to perform tumor treatment surgery

The fertilizer for a highly refined medical service

KUMC had endeavored to set up advanced medical facilities and equipment as a generative power for a highly refined medical services. | KUMC's structured medical treatment environment is equal to any of the world-leading medical centers as it provides MRI, 3.0T MRI, and one-stop examination TLA systems. | These require the best preparation and training of those working in an advanced medical environment and considerable investment in the equipment. | Therefore, KUMC will shine as the most refined medical service available.

GLOBAL STANDARD HOSPITAL

MORE PRECISE AND COMFORTABLE TREATMENT

I Each of KUMC's hospitals uses advanced equipment such as 64 channel CT and PET CT which perform faster and more precise examination. Moreover, extended eco-friendly renovated facilities provide a comfortable medical service environment.



LEADING DIGITALIZED HOSPITAL

I Aiming to be a high-tech and digitalized hospital, KUMC introduced Full PACS in operations. As the first Full PACS system in Korea, it is simultaneously operated by 3 hospitals, providing the same visualized information in all of the KUMC affiliated hospitals, making KUMC famous as a "Digitalized hospital".



INTRODUCING THE MOST ADVANCED MEDICAL EQUIPMENT

I The most advanced medical equipment meets the global standard of KUMC to enhance the competence of our staff. With equipment such as 3.0T MRI, which provides 3-dimensional visual images with higher resolution, TLA which provides a one-stop examination system, and the Leaniac-sector accelerator for tumor treatment, we are striving to provide a highly refined medical service to our patients.



- 64 channel CT- giving more precise examination and faster results
- Operating scene of Full PACS, the integrated digital image transfer system
- 3.0T MRI 3.0T which enhances speed and precision of examination with 3.0 tesla (magnetic doubled from 1.5 tesla)

Highly refined treatment provided by the best and most advanced medical art

KUMC is introducing the most advanced medical art, which can boost the development of the domestic medical service level. | The Plastic Surgery Team was praised and even asked to write for the manual of plastic surgery, for their distinguished and successful restorative surgery on close junctions. | The world renowned cardiovascular center specializes in cardiovascular disease. | Prominent specialized centers, including the “First Micro Invasive Operation Center” with a record number of operations, represents and spearheads the role of KUMC’s advanced medical science. | Moreover, KUMC strives to achieve a “Future without disease” through distinguished and advanced medical service expertise on the most common diseases in Korea such as digestive organ disease and cardiovascular disease.

The best and utmost efforts,

Our Value

Close-Junction Operation | KUMC is recognized worldwide for its expertise in close-junction surgery, the most difficult type of surgery

BEYOND ASIA, LEAPING INTO THE WORLD

World Proven Specialized Center for Cardiovascular Diseases

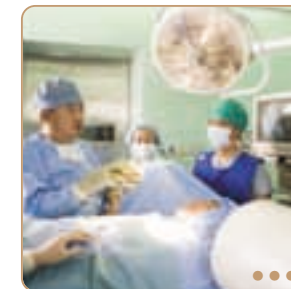
I With the combination of experts and the most advanced equipment and facilities, KUMC’s cardiovascular center is undoubtedly known as the best treatment center. KUMC’s prominent services are provided in Anam, Guro, and Ansan within the same specialized environment. This cardiovascular center has been recognized as a world-leading hospital for cardiovascular diseases with all types of operations being possible as in other countries.

Providing Customized Service in Each Disease-Digestive Organ Center

I First introducing the use of a capsule endoscope for examination in 2002, KUMC is the center for every expert surgeon, who is specialized in stomach, intestinal and bowel disease. KUMC took the leading role in utilizing endoscopes as a treatment tool rather than only for examination. Thus, we have achieved 90% success in varices treated by using an endoscope.

The Best Ability to perform Micro Invasive Operation

I KUMC’s Micro Invasive Operation Center is the ultimate center in the brain function sector and spinal sector managing motor disturbance, brain tumors and epilepsy. Our ten year long research history on nerve intercepting methods and high-frequency nerve treatment, nerve stimulus methods and the micro invasive treatment sector helped KUMC to obtain an unchallenged importance.



- Operations performed at the worldwide famous cardiovascular center
- The digestive organ center provides customized services for its individual diseases
- The Ansan neurosurgery team has recorded the highest number of operations, up to ten thousands micro invasive operations, in the last four years

Inside and outside
the Nation,

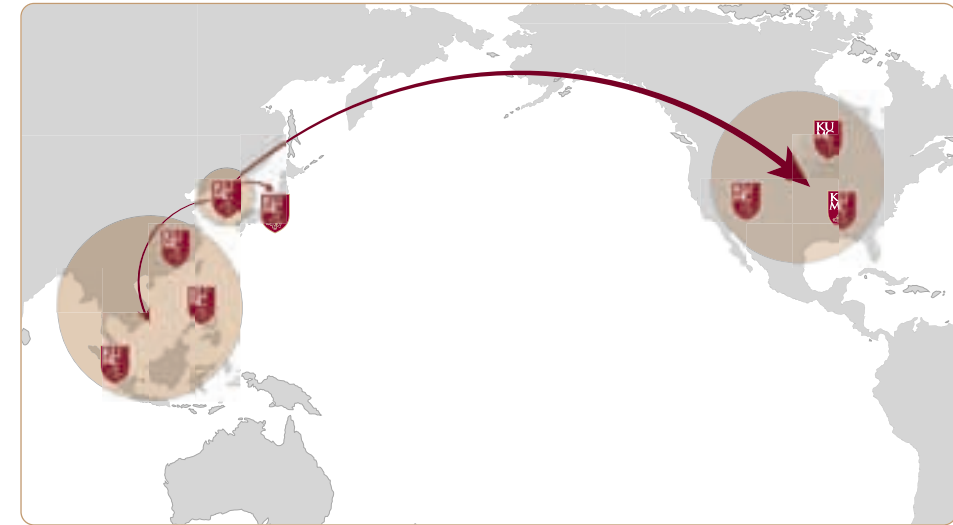
Us as the axis

Touching the World as a Medical Network Hub

Medical Cooperation | Aiming to be a top global medical center with a structured medical network with about 300 hospitals inside and outside of the nation.

Total Medical Network

KUMC cooperates with many organizations to build infrastructures to contribute to the Community. Medical supported Network. | KUMC provides financial support to child patients by cooperating with the Korea Times and also provides aid and cultural events by cooperating with Shin-Han Bank. | KUMC also helps to provide medical services to overseas Korean citizens as the nation's representative hospital. | KUMC strives to provide a total medical network by interacting and cooperating with 300 other hospitals as well as famous medical centers worldwide.



KOREA

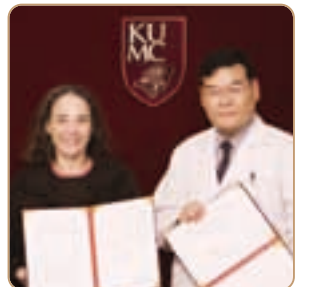
- 2005.05.03 | Set up sisterhood relationship with Special Warfare Command
- 2006.12.05 | Concluded MOU with Korea National Varulence Research Center
- 2007.03.20 | Concluded MOU with Korea National Chemical Research Center

ASIA

- 2005.12.08 | College of Medicine, Concluded MOU with Kurume University Medical School in Japan
- 2006.05.24 | College of Medicine, Concluded MOU with Kazach Medical University
- 2006.09.25 | College of Medicine, Concluded MOU with Gajah mada University Medical School in Indonesia
- 2006.09.28 | Anam Hospital, Concluded MOU with Chang-I General Hospital
- 2007.10.01 | College of Medicine, Listed as the proven overseas Medical Schools by Singapore

AMERICA

- 2005.03.18 | College of Medicine, Concluded MOU with Dalhousie University Medical School in Canada
- 2005.09.20 | College of Medicine, International exchange program arranged with UC Irvine Medical School
- 2005.11.11 | Concluded MOU between Harvard Medical School and Geneatrics Research Center of Anam Hospital
- 2006.05 | St. Jude Medical designated Arrhythmia Center of Anam Hospital as Center of Excellence



- Completed MOU with Kurume University Medical School, Japan
- Completed MOU with Harvard University Medical School
- Completed MOU with Chang-I General Hospital on vitality interaction and collaborated research

INTERNATIONAL MEDICAL NETWORK

KUMC's Medical Network

To be a worldwide medical center, KUMC is impacting the world as a hub for an international medical network by interacting with many worldwide institutes and organizations. Not only is it developing Korean medical centers in this respect but it is also expanding the infrastructure to international organizations. By affiliating with many prominent institutes, KUMC is extending its structure to form an international medical network. Moreover, KUMC is taking steps to play an important role in interaction with major overseas medical centers and is preparing to take a better position in the medical market for its human resources, material exchange and co-research programs.

Touching Care from Centuries of Health Studies

Study, Research and the world without disease,

what we hope for

Hantan Virus | Defined as the root cause of Epidemic Hemorrhagic Fever, was named by the Korean Dr. Lee, Howang who first identified it.

Research for mankind and un-yielding values

From fundamental to high-tech and the most advanced future medical studies, KUMC has been a motivating power for the development of medical science. | And we have reason to be. | KUMC is striving to advance and to become the 21st century's leading medical research center. | We are aiming for a "Future without Disease" by conducting various research studies in expert training schools where 3 combined hospitals are fully equipped with high-tech medical equipment. | As for the improvement of the research environment, the Committee for research development and the research interaction team was founded within the school. | KUMC gives omni-directional support to over 300 professors to focus on their research. | This is surely an asset and value of KUMC, promising to be the world's leading "Research based" medical center in the near future.

HISTORIC HEALTH STUDIES

The development of the first vaccine for Epidemic Hemorrhagic Fever

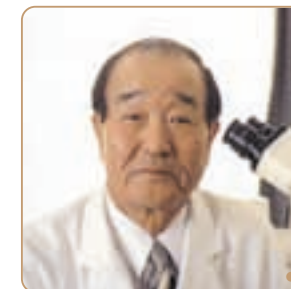
Epidemic Hemorrhagic Fever is known as one of the three most frequent infectious diseases, the others being Malaria and Hepatitis. In 1976, the KUMC Medical Center Research team discovered the Hanta virus responsible for Epidemic Hemorrhagic Fever. As a result, the study of the virus's scope was expanded and provided mankind with a solution to this disease. In 1988, this research center developed a preventative vaccine, Hantavax, which is now used in every region in Asia.

Contributed to the advancement of democracy in Korea

The Medical Jurisprudence Research center contributed to the development of a "human rights ensured" democratic society by returning the jurisprudence knowledge, gained through intensive research to society. In 1987, KUMC studied major historical juridical cases including Jongchul Park's death by torture case, which spurred on the Korean democratic movement. Through these studies, KUMC achieved an outstanding position in the medical jurisprudence field. Now the KUMC Medical Jurisprudence Research center is conducting intensive research into personal identification using DNA chips and time a ssumption after death.

Scientific Verification of a Mummy

The Nation's attention was once again drawn to the KUMC research center when we announced a first time study of the 440 year-old Korean mummy of Lady Yoon, a former Korean queen. Later in 2004, the KUMC research center verified the cause of death of a 600 year old General Hakbong mummy by using tooth and bone and by episcopes examination.



- Dr. Lee, Howang, who verified Epidemic Hemorrhagic Fever virus
- The viral disease research center is now conducting research on hospital viruses including the Hemorrhagic Fever Virus
- The study and research of the Mummy- social status, cause of death, year of death, and life style in ancient-times were all verified by research



Korea Artificial Organ Center | Researchers on research project to study various subjects on artificial organ with its capability proven by internationally.

Upgrade research competence through government grants

KUMC has been actively involved in government sponsored programs. | A clinic for type 2 diabetes, a melancholia clinic, a transitivity cancer research program, a dielectric research center for lung, breast, and ovarian cancers, an artificial organ center, a human DNA research center, and a research center for myocardial infarction by use of stem cell methods have been selected to conduct research for government sponsored programs and therefore are achieving outstanding results. | Through running the above mentioned government sponsored programs and research studies, KUMC synergy impacts will eventually become the asset and core competence to survive in the fast changing medical industry.

RESPECT FOR LIFE, THE BEGINNING OF THE RESEARCH

The Sole Artificial Organ Research Organization- Korea Artificial Organ Center

The Korea Artificial Organ Center is an internationally recognized research center, specializing in artificial organs. Following the artificial heart, artificial kidneys and liver are being studied at this center. The research on artificial organs which can prolong the lives of patients who are losing hope will surely be the generative power for the next generation medical industry field.

Constructing A World Famous Research System by Securing Unique Research Resources

The Korea Lung Tissue Bank established in 2002 is an organ bank for public research purposes that will assimilate DNA research organizations. Through the operation of this bank we could secure research resources. This would provide not only resources, but also donors by active distribution of such research resources and so on.

Dielectric Research Center for Lung Cancer and Breast Cancer

This center is devoted to study particular cancers that are most frequently seen among Koreans such as lung, breast and ovarian cancers. To study and to achieve significant results, the center involved Korean cancer organizations and dielectrics. Through them, the center developed the revelation-changing method and the SNP developing method to verify the stage of cancer progress. As the result, the center was designated as a dielectric research center by the Ministry of Health and Welfare.



- Artificial organ center where clinical staff and researchers develop efficient joint projects
- Research team operating the government sponsored Korea Lung Tissue Bank
- Dielectric research center for lung, breast, and ovarian cancers, artificial organ center

Outstanding,
Hardening,
Fundamentals,

Specialty of US

Dielectric Research Center for Mental processing Drug | Researchers working to develop treatment for melancholia based on individual DNA Characteristics of Korean

Core competence in research - Securing ample resources for research

Securing ample raw materials is the key for successful research. KUMC runs the development securing system to support such needs. | We believe that selecting the right tools for the right research is also research itself. | Attention-drawing research studies are carried out at the Human Dielectric Research Center and the Research Center For Myocardial Infarction by the use of stem cells. KUMC is rising as a pioneer of the 21st century's core medical science field. | The Dielectric Research Center for Mental processing Drug Researchers is working to develop treatment for melancholia based on individual DNA Characteristics of Koreans.

RESEARCH, MORE THAN JUST RESEARCH

World Famous Achievements in Research From the Korea Dielectric Bank

I The Human Dielectric Research Center of KUMC is actively involved in research to analyze the dielectrics of Koreans, prevalence rate of Korean disease, and the cells responsible for disease development. As more than 4,000 people are participating in cohort studies at the dielectric research center, these studies have been appointed as designated community cohort studies by the National Health Committee.

Medical Research Center for Environment Toxicity in Dielectrics and Proteomics

I The Medical Research Center is now running the project for Environmental Toxicity in dielectric and proteomic systems. This program was awarded as a 9-year long-term project to enlarge the capacity of fundamental medical science and human resources. The project is primarily focused on proving dielectric-findings for early diagnosis and also on finding biomarkers of Environmental Toxicity in dielectrics and proteomics, vulnerable DNA development, merchandizing biochips and setting up a database for toxic environmental dielectrics.

Mecca of Future Video Medical Science - Media Medical Center

I MThe medical media center is striving to develop fundamental technologies involved in and analyzing high-resolution multiple bio-media tech, bio-molecule image technology, and 4D medical media technology. This will contribute to its development into a new dimension.

- Seminar for conference on prevalence rate and cohort studies for human inheritance
- MRC research in dielectrics and proteomics, exposure evaluation, toxic influence evaluations, and toxicities results in animals tested
- The research team of the Media Medical Center in Guro hospital- the hospital leading with advanced media medical equipment

Healing Touches from Sound Education

From Us, of Us,
Best of Us,

Asset, Pride and the
Brand-value

The most valuable investment, cultivating people

Our most valuable asset is people. | The globally leading KUMC has massively expanded its number of staff and professionals for training. We have also placed a great deal of effort in providing the most advanced educational equipment with high technologies in appropriate places. | Also to improve the education of students, KUMC is in the process of digitalizing the Medical Library. Through upgraded programs and systems like e-Learning, KUMC will take another step forward to be the leading school in the nation as well as in the world. | KUMC is cultivating potential human resources and intensifying competence in research and services in the 21st century's Bio-Science Era. | Such preparation and investment for a better future by KUMC will continue.

NEW FRONTIER OF GLOBAL KU

Education to Meet Global Standards

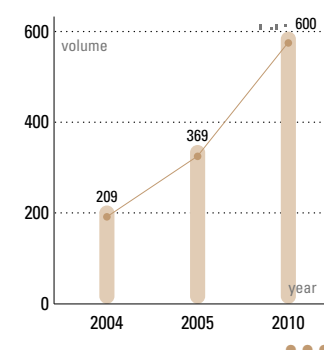
| KUMC strives to provide global standards of medical education by innovatively re-organizing and modifying curriculums for undergraduate and graduate students. To enhance self-motivation and problem solving skills in the students, KUMC has integrated similar curriculums into a group and also incorporates humanities, psychology, literature and social science courses as part of the mandatory curriculum.

As Part of the Innovated Administration

| KUMC has formed an infrastructure in the library system that is easily accessed by students. In 1995, It also launched a fully-equipped library with a computerized reference system, called Vintage. The system provides a searching function for the library's 2500 e-journals and the databases of MEDLINE, CINHAL, and EMBR etc.

New Proposition, Research-oriented Medical School

| Fundamental and clinical studies are a motive for developing power to enhance the training system of the world-famous human resources at KUMC. Therefore, our medical school is trying its best to increase the research funds from the current 15 billion won to much more and to recruit more than 200 clinical research professors to perform "Research based school" projects. If this effort is fruitful, KUMC will take top place in the world in the research sector by doubling the number of SCI dissertations from the current 300.



● Self-motivated KUMC students at the KU college of medicine
 ● Medical library computer lab where the most advanced inside and outside of the nation's databases are collected
 ● Accumulative SCI dissertation graph, yearly based, with volumes owned by KUMC

Sharing
Loving

Things we ought to do

Touching Hearts around the World

Overseas Community Service | Service has provided medical services to serve our neighbors in Pakistan by sending groups of volunteer

Practice sharing the services

Happiness comes more when shared. | Throughout history, KUMC has continuously maintained the sharing love projects. | The KUMC medical service team has traditionally tried to help orphans, single families, disabled people and foreign labor workers in Korea. | The areas are not restricted, since KUMC sharing team has cared for people from rural areas, isolated areas, small communities in various cities and disaster-affected areas within the nation. | The sharing also goes beyond the border. | The KUMC sharing team was sent to unknown areas and set up voluntary service systems with unlimited care for others.

UNDER THE NAME OF HOPE AND LOVE

Medical Care to Global Regions

| KUMC shared our light of hope with Sri Lanka- suffering from earthquake and seismic wave and Pakistan- suffering from massive earthquake that almost destroyed the nation. KUMC medical team was sent to treat wounded mind and bodies of global neighbors. Elite surgeons and staffs voluntarily chosen practiced benevolent medical services under full support of KUMC.



Free Medical Treatment in Rural Areas

| Ansan hospital, Seochang campus of KUMC, and Yeongi province cooperated in, "Free medical treatment MOU" to share true community services in rural areas. Considering elders living in poor medical service areas, KUMC is committed to providing continuous medical community services and to keep up this tradition.



Community Service and Sharing

- Accomplishment of the True meaning of Hospital

| After proclaiming the "Human-oriented true hospital" vision, KUMC expanded and re-organized its Social Medical Business team to care for low-income families and patients with incurable diseases. Moreover, KUMC has shared its services with Sakhalin immigrants and overseas Chinese immigrants. KUMC has made a great deal of effort to help North Korean medical service environments by sending equipment to North Korea through the International Red-Cross.

- Voluntary Medical service activities in countries in South East Asia
- Free-medical service activity at Jin-Chung, Chung-book province, with 3 hospitals combining as the first step of the "Sharing" project
- Annual Medical treatment community service in Morocco for mouth-disease patients

A Caring Touch Made in the Hope of Bringing Joy

Your health,
Our dream,
Our Wishes

Patient-oriented Culture | Hospital staffs caring patient just like the family

Sharing the joy of healing

KUMC strives to offer a friendly hospital culture for our patients to enjoy. | The Love concert, which is scheduled every Saturday, is held in the hospital lobby where patients, visitors and staff can mingle and share their joy of various performances and concerts. | Understanding that it is not only the body that is ill, we wish the fastest recovery of body and mind to our patients by providing treatment with loving care that has presently been harmonized with best medical services. | A caring touch made in the hope of bringing joy and happiness.

VARIETY IN CULTURE, ONE WAY FOR HEALING

Sharing love and comfort-Love concert

The Love concert was started as a part of setting up a new hospital culture to share love and joy and has been continuously in progress for 4 years. Various and enjoyable performances have been shared with sick patients, guardians, visiting patients and even the local community.

Upgraded Customer Service, Friendly leader team

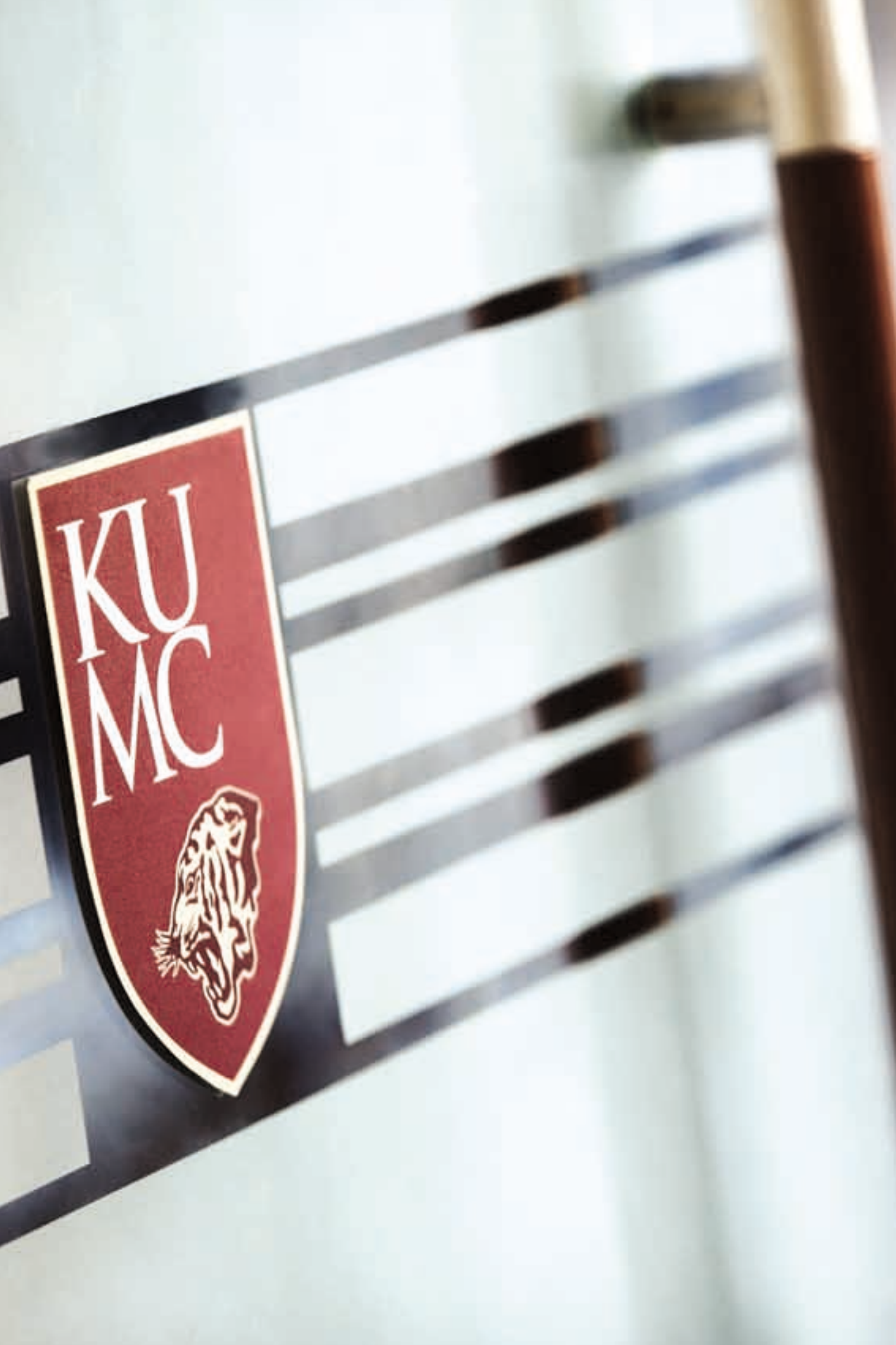
The Friendly Leader team at Ansan hospital was launched to provide a more friendly and easily accessible service to our clients. To spread a "Kind service mind", the team will be leading improvements in friendly service levels for our community.

For Sharing Joy of Childbirth

KUMC has completely remodeled the facilities for families to share the joy of childbirth in a more "Home-like" environment by restructuring the rooms to be used for both infants and mothers. Our staff in the Departments of Obstetrics and Gynecology are fully trained in new birth methods such as sophrology to provide alternative choices for mothers during childbirth. We are doing our best to provide the most refined and sensitive care to make the moment very special and memorable for all family members.



- Becoming the place for new culture sharing
- The Love concert at Anam Hospital
- Variety of events and promotions are ongoing for our clients within the hospital



Striving to be the Best Medical Complex

Aiming to be a polyclinic organization with the 21st century's leading competence.

KUMC appears to be the best general medical center and includes the College of Medicine, the Graduate School of Public Health&Clinical Dentistry, and the College of Health Sciences. KUMC also includes the three affiliated hospitals of Anam, Guro, and Ansan, which are systematically harmonized with the three most important medical service factors of research, clinical services, and treatment. Having the most passionate staff with advanced medical skills and a well developed research infrastructure, KUMC puts itself forward as a leading general medical center.



Toward Global Frontier of Research Based University

Korea University's College of Medicine

College of Medicine and Library

| | | |
|---------------------------|--|--|
| Number of students | 180 undergraduates / 501 graduate students | |
| Number of faculty | 366 professors | |
| Land Scale | 15,631m ² | |
| Scale of Library | building | 3,428.33m ² |
| | seats | 560 |
| Archive | books | oriental studies 36,093 western studies 66,992 Paper 9,321 Total 112,777 |
| | etc | 1,393 e-books CD-ROM (Including DVD) 378 Video Tapes 671 Audio Tapes 2 Total 1,051 |

(2nd Semester, 2007)



- View of college of medicine and library
- Leading global KU, Students of college of medicine
- Students participating in debates- dreaming to be talented global medical resources
- Being proud of the variety of our experimental curriculums



New Frontier of Global KU College of Medicine

The Korea University's College of Medicine is a leading college at Korea University. KUMC has been striving to cultivate future leaders with both advanced abilities and humanity. Through this effort, the College of Medicine has been contributing to Medical science to advance Korea in general as well as scientific Korea. As the result, KUMC was recognized as the best medical and graduate school by the University Committee of Korea in 1997 and has become an important and leading medical school in Korea. We launched the information based portal system in 2002 and concluded MOU with UC Irvine in 2005 and with Kazach Medical University in 2006 for interaction of exchange programs for people and equipment.



Pioneer of
Health Profession Education

**Korea University's College of
Health Sciences**

College of Health Sciences

| | |
|---------------------------|---|
| Established | March 1st, 1963 |
| Department | Physical Therapy, Radiology, Clinical Pathology, Dental Lab Science, Bio-medical engineering, Food and nutrition, Health and Administrative departments |
| Number of students | 510 (Health Sciences: 694) |
| Professors | 36 professors |
| Land Scale | 27.145m ² |

(2nd Semester, 2007)



- View of School of public Health and Science
- Scene of lecture on physical therapy site experience oriented education
- Scene of environmental health class
- It is practiced by one to one lessons in the dental science lab



Healthcare Specialist Education of Health Profession

The College of Health and Sciences is cultivating elite and leading medical doctors and specialists under the vision of the "Global standard School for Health Sciences Sector". Since health science is needed, the KU School of Health and Science is in the process of setting up the research infrastructure for best adjustable for future. In line with such a policy and goal, KUMC has combined its medical complex with the School of Health and Science to achieve a consolidated environment for training and education. Through the progress, KUMC will have concrete information based foundations that will eventually help KUMC to be a world-renowned medical center.



Leading Graduate School
for Medical Professionals

**Korea University's Graduate School of
Public Health & Clinical Dentistry**

Graduate School of Public Health & Clinical Dentistry

| | |
|---------------------------|--|
| Established | March, 2000 |
| Department | Environmental Health and Sciences, Epidemiology and Health information department, Health Policy and Hospital Administration |
| Number of students | 123 undergraduate students |
| Professors | 17 professors |



Graduate School of Clinical Dentistry

| | |
|---------------------------|---|
| Established | March, 2000 |
| Department | Orthodontics, Oral and face surgery, Restorative Dentistry, Advanced prosthodontics, Implantology |
| Number of students | 88 students |
| Professors | 32 professors |



(2nd Semester, 2007)



- View of Clinical School of Dentistry
- Experimental Lab class for Clinical School of Dentistry
- Medical staff presenting at an international implant symposium
- Dental lab science class receiving personal tutoring to develop professional knowledge

Leader of Professional Medical Specialist Graduate School of Public Health & Clinical Dentistry

Professionalism requires a health clinic and a professional-training dental School. The school was first opened to students in March, 2003. Within a short period of time, the school became the leading institute among all the allied schools. The School of Clinical Dentistry was founded in March 2003 without having a specialized dentistry school within. The School of Clinical Dentistry has an agreement with the University of British Columbia for an international exchange program for interactive information and human resources exchange. Both graduate schools provide variable channels for cultivating creative and competitive leaders in the field by providing programs such as Continuing Education etc.



New Paradigm
of Medical Care

Korea University Anam Hospital

| Anam Hospital of Korea University | |
|-----------------------------------|---|
| Established | Sep 1st, 1941 |
| Land scale | 72,584m ² |
| Sickbeds | 946 |
| Special Centers | Refrigerated Operation Cardiovascular Center Research center for Cancer General Polyclinic Center Respiratory Center Plastic surgery Center for Ear Digestive Organ Center Emergency Center Daily operation Center Robot Operation Center Sport Medical Center Organ Transplant Center Clinical Center Intergrated Medical Center |
| Service department | 35 departments |
| Special Clinic | 120 Clinics including clinics for Liver, Lupus Menopausal disorder, Peripheral nerve disorder, Paralysis rehabilitation and Pakinson Disease |



- View of Anam Hospital
- TLA system which enables one-stop diagnosis service by blood sampling
- Health promotion center with advanced treatment systems
- Friendly reception area, the first step for better customer satisfaction



New Medical Service,
Korea University Anam Hospital

| Anam hospital is providing “Patient-oriented” medical services for the 21st century. | Anam hospital is trying to centralize through choice and focus with the introduction of the latest technology equipment such as PET-CT, PACS, EMR, and TLA systems. | After extensions and renovation, an additional 938 patients beds were approved. | Therefore, the hospital has over 1,000 beds. | At the same time, active interactions with major international medical schools are continuing. | Not satisfied with the current situation, Anam hospital has introduced a synthetic medical information system to set the new paradigm for medical services. | As the result of such efforts, Anam hospital has been promoted to 4th ranking as a top satisfied- customer hospital in Korea.



The Excellence Hospital,
Leading the Next Century

Korea University Guro Hospital

Guro Hospital

| | |
|---------------------------|--|
| Established | September, 1983 |
| Land scale | 78,707m ² |
| Sickbeds | 1,050 |
| Special Centers | Liver & Digestive Organs Center Cardiovascular Center Cancer Center for Women Cancer Center Diabetes Center Face and otorhinolaryngology Center Skin Plastic Surgery |
| Service department | 35 departments |
| Special Clinic | 129 Clinics including Breast Cancer, Urinary Cancers, stomach cancers, Pain Clinics, Spine, and Overweight control |



- View of Guro hospital
- The most advanced digital Cine-angio scene of operation
- MRI Treatment scene
- Emergence patient-transferring scene

North East Asia Medical Hub, Guro Hospital

Guro Hospital, which serves the health and welfare of the south Seoul region, had a 2nd opening with the completion of a new building and main building renovation. | Building competitiveness based on the trust for patients by specializing the management sector and service sector, Guro hospital was selected as the highest customer satisfaction medical school hospital by a survey conducted by the city of Seoul. | The grand opening of the remodeled main building and completion of the new building of Guro hospital achieved the reputation of having 1,050 beds, advanced equipment, and innovative treatment systems. | Guro hospital will continuously develop to be the best leading hospital in the north Asia region.

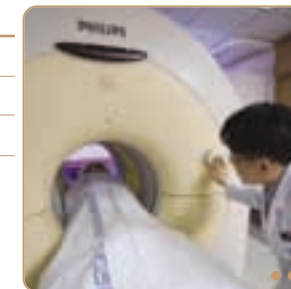


Selection and Concentration for Community Hospital

Korea University Ansan Hospital

Ansan Hospital

| | |
|---------------------------|--|
| Established | April 1985 |
| Land scale | 59,402m ² |
| Sickbeds | 589 |
| Special Centers | Emergency Medical Center Industrial Medical Center Sleep & Dyspneic Center Rehabilitation Medical Center Clinical Center Integrated Health Dygnosis Center Digestive Organ Center Cardiovascular Center Plastic Surgery Center Spine Center Artificial articulation Center |
| Service department | 35 departments |
| Special Clinic | 127 clinics including clinics for Hypertension, Diabetes, Funnel Chest, Infertility, Ear disease, Child Blood Tumor clinic, Thyroid, Over-weight Control, Atopy and Breast Cancer |



- View of Ansan Hospital
- MRI examination scene
- Ansan Hospital made it possible for the "Sharing" vision to be applied to community hospital cultures
- The main undertaking emergency medical service to Southwest region of Gyunggi region

Hospital with Major Strategies

Ansan hospital

Ansan Hospital provides customized medical services to the community of Ansan, and was unknown for advanced medical services in the past. Intensification of regional community relationships, large scale cohort studies, and its customized service were the principal factors in making Ansan hospital dominant in the west region of Korea. The Emergency center was built because of easy access for customers. By having an Emergency Center for transportation efficiency, Clinical Lab Center connected to IT Venture complex, Industrial Medical Center and Rehabilitation Center. Because of growing demand for medical services by the Banwol-Sihwa Industrial complex, Ansan Hospital is becoming the best medical school hospital in the south west Gyunggi region. The hospital being selected as an Excellent Goal-Achieving Organization in 2005, will strengthen its competitiveness by means of promoting this specialized center.



Leading the way to Best Medical Center

Dream comes true,
a leap toward a global medical center

KUMC devised a mid-to longterm master plan for the growth and expansion of the hospital. | The new vision was proclaimed as the result of continual and great efforts invested in education, research, and services. | The new vision and mission will consolidate the three-core functions of Education, Research and Service and will help to enhance the system to be a competitive medical center and to be shared with every member of the center. | The improvement strategy has a main concept of 5 core values: Most Refined Service, Creative Research, Cultivating People, Happy Administration, Share and Service-under “Human oriented True Hospital aiming for the very best” vision. | With such a vision, KUMC will aim to lead KU to be one of the world’s top 100 universities. Furthermore, it will earn its place as a forward moving global and advanced medical center.

VISION

Our hospital, dedicated to human well-being, will provide the finest care with utmost reliability.

MISSION

Safeguarding the health of patients, we are determined to contribute to healthy living through the finest treatment, research and education.

CORE VALUES

Creative Research

Become a world-class life science research institute by carrying out creative research activities.

High-Quality Treatment

Provide reliable, trustworthy high-quality treatment.

Fostering of Talented Professionals

Fostering of talented professionals needed for the medical profession of the 21st century.

Management in Happiness

Manage to promote happiness throughout KUMC with all staff united with great pride and achievement.

Sharing and Service

Become a medical institution of voluntary sharing and service for the disadvantaged and suffering outside as well as inside Korea.

We are always leading the way to better life, KUMC

Being a Central hospital in North East Asia region

Foundation hardened by intensifying competence and renovated management, KUMC does not stay in one spot but continuously plans for the future. | The current medical school building will be used temporarily as a cancer center during building of the new complex. | In this new building complex, the Outpatient Center will also be connected to the subway station for better and more convenient access by patients.



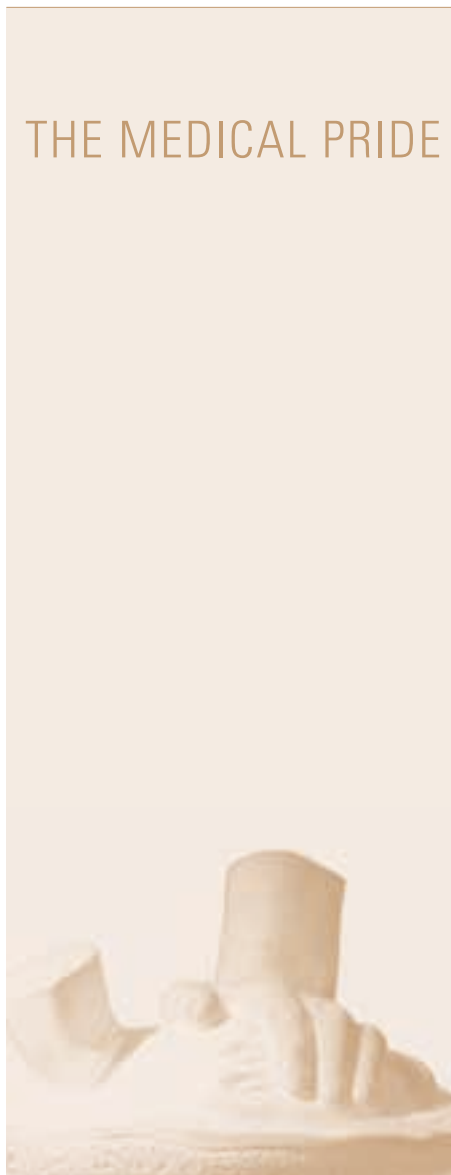
KUMC FUTURE

Newly constructed medical center with up-to-date facilities at Anam Hospital

A new building extension for the College of Medicine

Opening an extension at Guro Hospital





Challenging, Leaping, and becoming the Pride



KUMC has a history for challenge and leaping forward for a better future.

And now, we reflect the new future behind the history.

We give our thoughts and wishes that KUMC be the name for hope and healing one day.

Under the vision of “the very best medical center”,

to move forward without hindrance,

We, in every faculty of KUMC, will strive to open this new phase of Medical history.